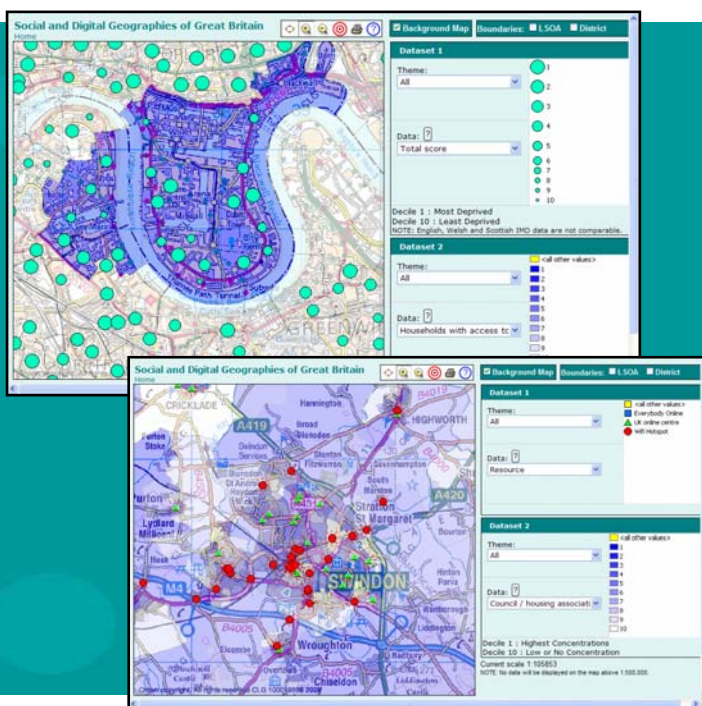


## Tell me more about Community Maps

Community Maps helps local service providers tackling digital and social exclusion identify where services are needed most. It does this by placing data on a map in a clear visual format which simplifies decision making about a local place.

This web based interactive tool places digital (e.g. internet take-up), social (e.g. household income) and resource (e.g. UK Online Centres) data on a map at a community level. Datasets have been provided by partners including Experian, Point Topic, University of Essex, Connection Services Ltd, UK Online Centres and Citizens Online.

**Community Maps is a pilot web site to test demand for this data at a local authority level.**



*“Inequality in the use and application of digital technologies is a new driver of social exclusion in the 21st century, which risks accelerating existing social divides and creating new ones. Digital exclusion is a symptom of wider exclusion, but also a cause.”*

### Delivering Digital Inclusion

<http://www.communities.gov.uk/documents/communities/pdf/1001077.pdf>

Local authorities are working towards fair, safe and equal societies. To achieve this goal they must help citizens tackle complex social problems, reaching out to people who are disadvantaged, suffering from “social exclusion”; often having three or more big problems in life such as no job, no home, no money, poor health, victim of crime, no public services and poor education and skills.

The Department, through the Regional Improvement and Efficiency Partnerships and the Digital Inclusion Team, is supporting work to increase local authorities’ ability to use technology to provide innovative and successful services around the more entrenched problems affecting disadvantaged communities and people. Delivering successful services such as health care, housing, crime, employment, community development and education to name but a few, are key to helping more vulnerable people overcome problems, gain self confidence and achieve the ability to take part in and contribute towards society. This work is called the “Digital Inclusion Capacity Building Programme”.

## Useful links

The Community Maps tool will help to identify the relationship between use or lack of use of technology at a local level and social indicators.

A new Community of Practice (CoP) has been set up for those using Community Maps and interested in sharing maps, knowledge and discussing enhancements and new datasets. A few example books of maps have been posted on CoP and templates to help to make the most of the site. The community is available at:

<http://www.communities.idea.gov.uk/c/1268496/home.do>

A short video demonstration is now available on ‘YouTube’:

[www.youtube.com/user/DigitalInclusion1](http://www.youtube.com/user/DigitalInclusion1)

If you have any questions about the site please email:

[mapping@digiteam.org.uk](mailto:mapping@digiteam.org.uk)

## Martha Lane Fox revealed as Digital Inclusion Champion

Lord Stephen Carter (Minister for Communications, Technology and Broadcasting) officially announced the appointment of Martha Lane Fox as the Government’s Digital Inclusion Champion supported by a Task Force of 10 independent expert advisors, as part of the Digital Britain report launch, June 2009.

The Champion for Digital Inclusion is independent of government, industry and the third sector and sets out to improve the lives and life chances for the six million UK citizens who are both digitally and socially excluded.

You can follow Martha on Twitter:

<http://twitter.com/MarthaLaneFox>

**Do you want to be kept informed about Community Maps?**

Simply register at [www.communities.gov.uk/placescommunity/](http://www.communities.gov.uk/placescommunity/)

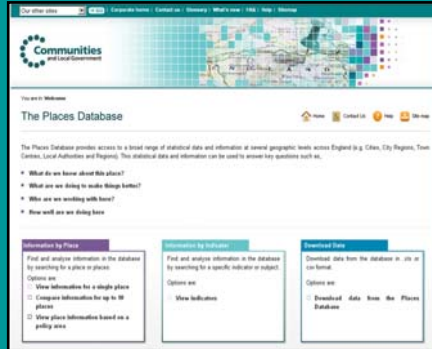
# Welcome to the Places Community

## Introduction

This brochure provides an overview and will assist analysts, researchers, policy makers and the general public to find and use statistics, analytical data resources and support services.

The **Places Community** brings together a wide range of statistical and geographic evidence around the concept of 'place'. It is a shared resource for the Department and its external partners/stakeholders intended to improve delivery of evidence-based policy and decision making. The Community's main aim is to enable a shared understanding of the "facts", and so facilitate stronger and more effective collaboration and partnership working on policies and programmes at local, regional and national levels.

Visit the different Analytical Windows, access the underlying data stores; register to be kept informed of future developments, and learn more about how data and mapping can work for you.



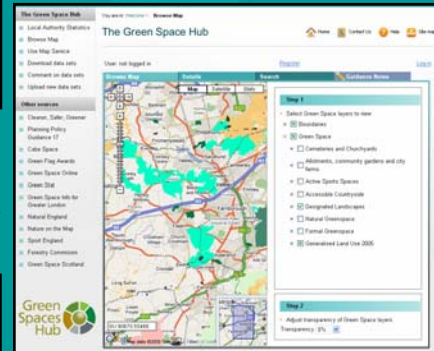
**Places Analytical Windows and Database**  
www.places.communities.gov.uk/places/

**Floor Targets Interactive**  
www.fti.communities.gov.uk/fti/



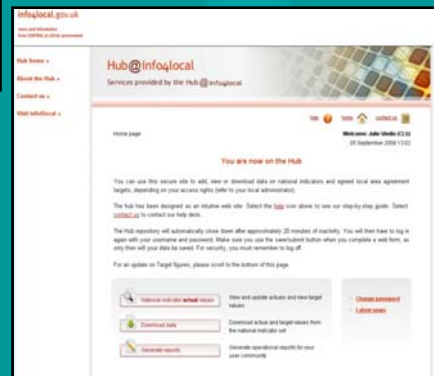
**State of the Cities**  
www.socd.communities.gov.uk/socd/

**Green Spaces and Geography Publishing Service**  
www.communities.gov.uk/placescommunity



**Indices of Multiple Deprivation**  
www.imd.communities.gov.uk/imd/

**Data Interchange Hub (The Hub)**  
www.hub.info4local.gov.uk  
www.communities.gov.uk/hub/



**Community Maps: Digital Inclusion**  
www.gps.communities.gov.uk/communitymaps  
Email: mapping@digiteam.org.uk

A new pilot programme for local authorities.